

mody

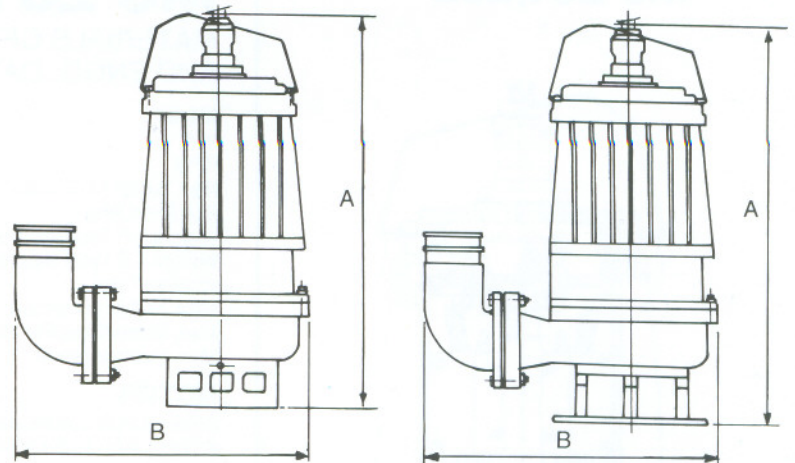
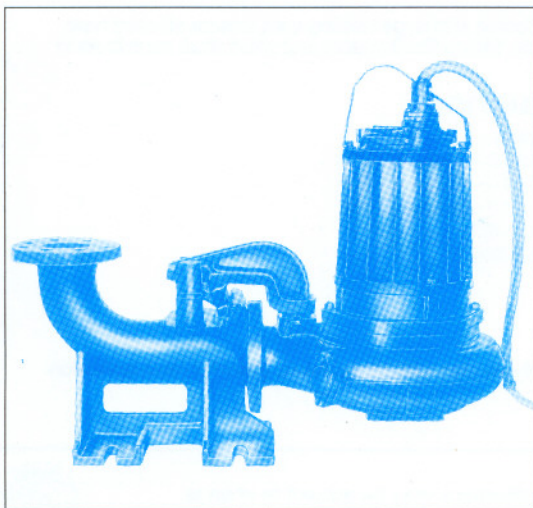
ELECTRIC SUBMERSIBLE SEWAGE PUMP

MS 230 SERIES

SUBMERSIBLE
SEWAGE PUMPS
FOR
STATIONARY
WET PIT INSTALLATION
(P TYPE)
MOBILE WET PIT
INSTALLATION
(S TYPE)

Model MS 231 - 3" Flange/Hose
(High Head - Med. Volume)

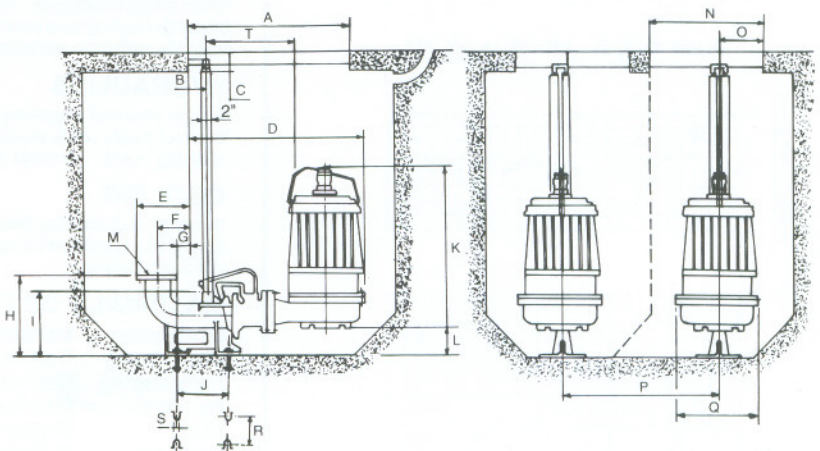
Model MS 232 - 4" Flange/Hose
(Med. Head - High Volume)



MS 231
A 670
B 440

MS 232
A 700
B 450

	A	B	C	D	E	F	G	H	I	J	K	L	M	N	O	P	S	R
MS-231	780	85	70	593	254	154	59	400	258	250	630	140	100	570	262	670	23	200
MS-232	780	85	70	593	274	164	69	400	258	250	650	120	100	570	262	670	23	200



mody industries (F.C.) pvt. ltd.

Corporate Head Quarters :
85/95 Mittal Court, B-Wing, Nariman Point, Mumbai 400 021. INDIA.
Tel.: (91-22) 284 4424 • Fax: (91-22) 285 1149.

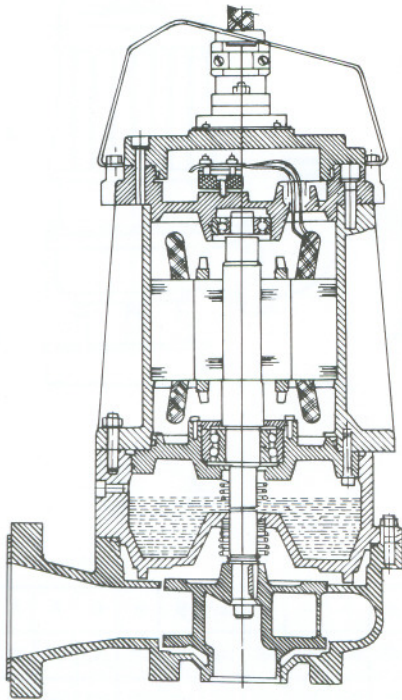
Factory/Sales :
Plot No. C-41, Road #34, Wagle Industrial Estate, Thane 400 604.
Tel.: (22) 581 1644, (22) 582 3850 • Fax: (22) 582 8217.

New Delhi Office :
203, Bakshi House, 40-41 Nehru Place, New Delhi 110 019.
Tel.: (91-11) 644 4668, 622 9512 • Fax: (91-11) 646 4228.

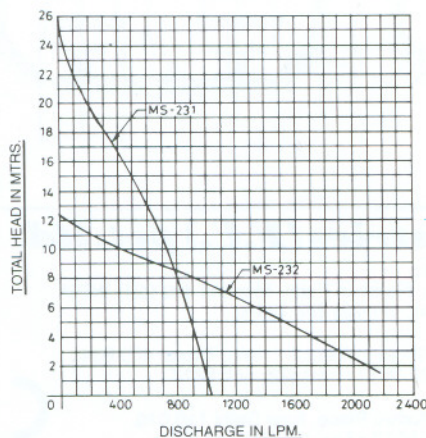
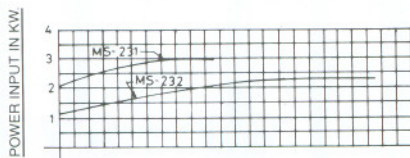


mody ELECTRIC SUBMERSIBLE SEWAGE PUMP

MS 231/232



PUMP MODEL : MS 231 & MS 232



MS 231/232

MATERIALS OF CONSTRUCTION AND ENGG. DATA SPECIFICATIONS:

Model	MS231	MS232
kW	2.2	2.2
RPM	2800	1400
Max. Amps (415 Volts)	5.5	5.5
Solid Handling	38MM	75MM
Weight-P Type (approx.) - Kgs.	145	155
Weight-S Type (approx.) - Kgs.	105	115
Impeller Type	Channel	Channel
Max. Temp. of Pumped Fluid :	40°C	40°C
Max. Starts/Stop Per Hour:	15	15
Max. Submergence :	10 Metres	10 Metres

MOTOR

2 Pole/4 Pole continuous rated motor with squirrel cage rotor. Bi-metallic switches embedded in stator winding to protect against overheating. Stator insulation class "F"

POWER SUPPLY

415 Volts +/-6%, 3 Phase, 50 Hz +/- 3% AC Supply. It is also available for any combination of voltage and frequency on special request.

BALL BEARINGS

The rotor shaft is carried in two ball bearings. The lower bearing is a double row angular contact-bearing capable of carrying high thrust and radial loads. The upper bearing is a deep groove, single row ball bearing. The bearings are filled with high temperature grease containing special anti-corrosive additive with no maintenance required for life.

POWER CABLE

Water proof /oil proof EPR insulated, single sheathed copper conductor flexible cable fitted with strain relief grip. 15 mtrs length, 6 cores of size 4 core 1.5 sq. mm + 2 core 1 sq. mm

SHAFT SEAL

Twin seals in tandem. Extremely compact, resulting in a short shaft overhang reducing shaft deflection to a minimum. Seal faces of Tungsten carbide v/c Tungsten carbide ensuring long life between service intervals.

HYDRAULICS

Single channel impellers, hydrodynamically balanced with improved flow pattern making them virtually unchokeable. Computerised design resulting in high efficiency and low running costs. Smooth contoured volute design ensuring low head losses.

COOLING

Integral cast cooling fins on motor casing with large cooling area ensure efficient heat dissipation and low temperature rise. Shrink fitted stators and short shaft contribute to efficient cooling.

MATERIALS OF CONSTRUCTION

Description	Material	Spec.
Stator casing	Cast Iron	IS:210 - Grade FG 200
Pump Casing	Cast Iron	IS:210 - Grade FG 200
Impellers	Cast Iron	IS:210 - Grade FG 200
Shaft	St.Steel	AISI 431
Hardware	St.Steel	AISI 304
Mech.Seals	TC V/S SiC	
"O" Rings	Nitrile rubber	

SURFACE TREATMENT

Primer with Epoxy and subsequently painted with black chloric paint for max. corrosion protection.

Due to product development, specifications may be subject to change.